

# DRY BULK CENTRE OF EXCELLENCE



THE DRY BULK MANAGEMENT STANDARD  
A FRAMEWORK FOR EXCELLENCE

## SAFETY MOMENT!

# Confined Space

Conduct gas tests when required

### Fatality Prevention Behaviors

You must:

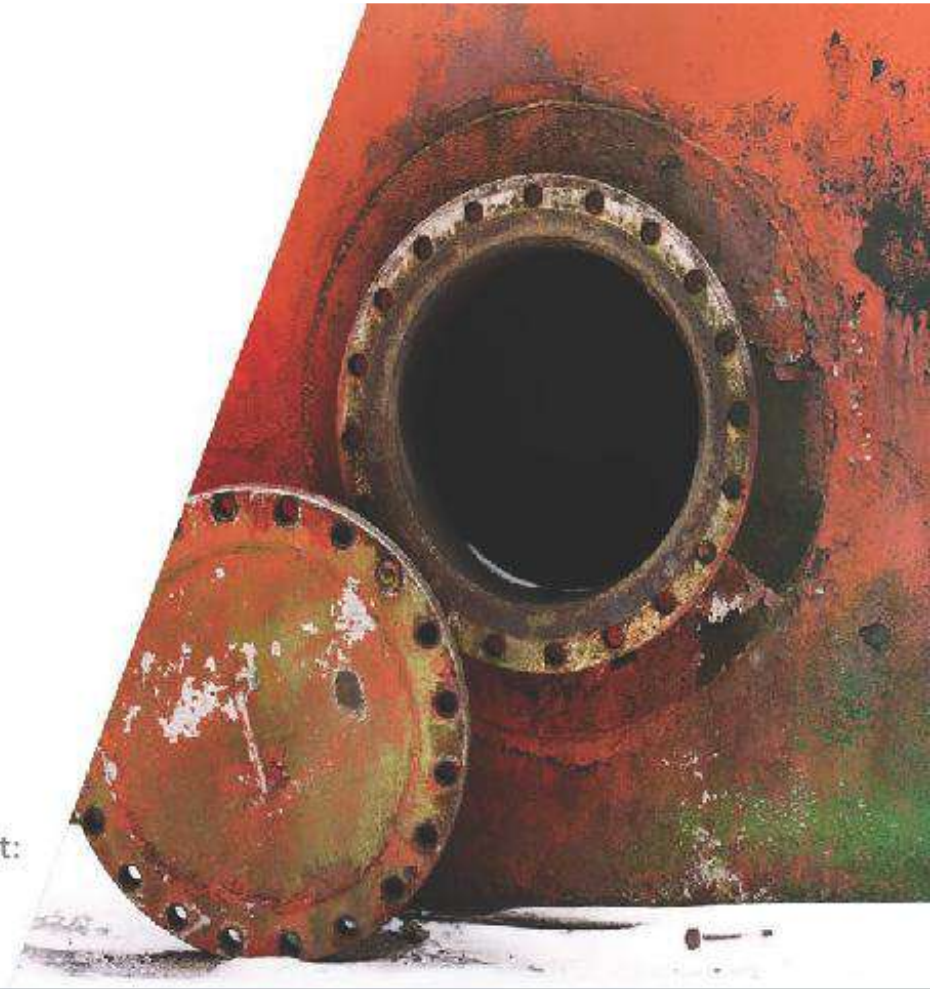
- Only enter confined spaces after you have confirmation that the atmosphere is safe by testing and monitoring

If you are the attendant/standby/sentry, you must:

- Continuously monitor the space and communicate with entrants

If you are the supervisor or person in charge of the work, you must:

- Ensure that rescue plans and equipment are in place



# AGENDA

DBCE

The DryBMS Platform

Sharing Self Assessments

Benefits

Verification

Self Assessment Scores

Question time



## OUR MISSION

THE DRY BULK CENTRE OF EXCELLENCE (DBCE) MISSION IS TO SEE A MARITIME INDUSTRY THAT CAUSES ZERO HARM, WHERE WE CAN DELIVER INNOVATIVE SAFETY, SUSTAINABILITY AND CREW WELFARE SOLUTIONS MAKING THE WORLD A BETTER, SAFER, MORE SUSTAINABLE PLACE TO LIVE.



THIS INITIATIVE AIMS TO ELEVATE  
SAFETY STANDARDS, ADVANCING A  
UNIFIED STRATEGY FOR THE DRY BULK  
INDUSTRY.

PERFORMANCE

PEOPLE

PLANT

PROCESS



Strategic drivers include:

LEADERSHIP

INCIDENT PREVENTION

STAFF WELLBEING

CARE

COLLABERATION



## Ship Operator Benefits:

Access to a self assessment platform

Confidential data storage

Built in guidance

Self assessment scoring

Controlled data sharing

Verification service

## Charterer Benefits:

Secure standardised data

Library of self assessments

Verified self assessments

Scored self assessments

Controlled data

# VERIFICATION

Verifier Accreditation System  
(VAS)

DBCE Accredited Auditors.

Available on request to  
conduct a verification audit  
of your published self  
assessment and report on  
it's veracity.

Audit report confidential to you.

Marked on platform.

Greater value to a charterer.



# SCORING METHODOLOGY

Score Recognition should be given to those doing more than the 'minimum'

Need to provide an incentive to aim for a higher standard

Justification for additional budget spending to progress gradually on discrete elements

Method aims to "drive" companies to work towards 100% in "Basic" and "Intermediate" levels and to earn points for progress made in "Advanced" and "Excellent" levels

Scores on "Intermediate", "Advanced" & "Excellent" count towards total score but at a discount of 5%





**QUESTION TIME**



**DBCE**

**Dry Bulk Centre of Excellence**

[dbce.org](https://dbce.org)

[info@dbce.org](mailto:info@dbce.org)